

Parking charges at Arle Court for users who don't use the bus service

From **Monday 13 May** we will be making changes to the parking arrangements at Arle Court Park and Ride.

If you use the car park but NOT the bus service:

- A parking charge of £6 per day will apply (£3 per day if parking after 1pm).
- A maximum of 150 parking spaces will be available for those who wish to park but not use the bus service.
- To book and pay for one of the available 150 parking spaces; you will need to use the MiPermit cashless payment system which is available online at **www.mipermit.com** or as an app at the Apple and Play stores.
- Drivers are able to book a parking space up to one week in advance, but once the 150 capacity limit is reached the MiPermit system will inform you that Arle Court is full.



For more information please visit
www.gloucestershire.gov.uk/arlecourt

Please see overleaf.

Pay to park information

MIPERMIT
Gloucestershire

www.mipermit.com
T: 0345 520 7007



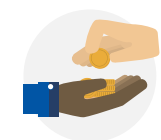
Gloucestershire
COUNTY COUNCIL

New payment system for Arle Court Park and Ride

From **Monday 13 May** we will be making changes to the parking arrangements at Arle Court Park and Ride.

New payment system for people using the car park AND the bus service

- Once you have parked your vehicle, you will need to enter your vehicle registration number on one of the touchscreen machines clearly signposted by the bus shelter.
- You will then receive a reusable ticket with a QR code. You should keep this ticket safe as you will need to use it on the bus (both the Stagecoach park and ride 93 service, and the Pulhams/NHS 99 service).
- When you get on the bus, you will still need to pay the bus driver, as usual, for your journey.
- Finally you will need to scan your QR code ticket using the reader on the bus. This will confirm you qualify for free parking.



Note: If the ticket isn't scanned on the bus, the user will be issued with a penalty charge notice and fine.

For more information please visit www.gloucestershire.gov.uk/arlecourt

Please see overleaf.

Pay to park information

MIPERMIT
Gloucestershire

www.mipermit.com
T: 0345 520 7007



Gloucestershire
COUNTY COUNCIL